

**Alcoa  
Fastening  
Systems**



# Hucktainer<sup>®</sup> Selection Chart

**HUCK**

<sup>®</sup>

# Table of Contents

## **Hucktainer® Pins**

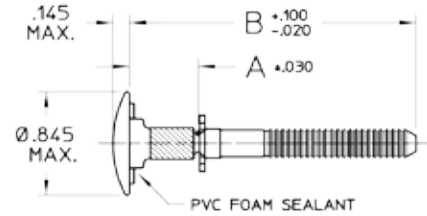
HLPVC Pins for Metal Clad Applications .....	4 - 5
Standard HLP Pins for FRP Applications .....	6 - 15

## **Hucktainer® Nose Assemblies**

Hucktainer® Nose Assemblies .....	16
-----------------------------------	----

# Hucktainer® Pins

HLMC Pins for Metal Clad Applications



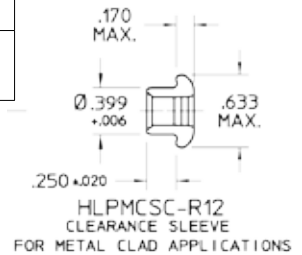
HLMC-R12-( )PL  
UNENCAPSULATED LOW PROFILE  
HEAD FOR METAL CLAD APPLICATIONS

### Steel Head, No Encapsulation, with PVC Seal

Part Number	Grip Range	"A"	"B"	Recommended Usage	Compatible Sleeves
HLMCP-R12-5PL	0.250-0.375	0.400	2.055	For exterior use against bottom rails, corner posts, top rails, panel surface and other exterior applications where fastener is bearing against metal surface.	HLMCSC-R12 HLMCSC-R12
HLMCP-R12-6PL	0.312-0.437	0.462	2.118		
HLMCP-R12-7PL	0.375-0.500	0.525	2.180		
HLMCP-R12-8PL	0.437-0.562	0.588	2.243		
HLMCP-R12-9PL	0.500-0.625	0.650	2.305		

### MC Clearance Head Sleeve

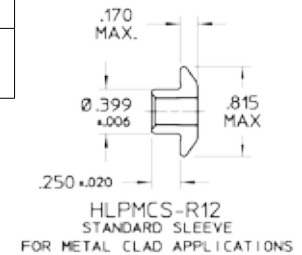
Part Number	Recommended Usage
HLMCSC-R12	Clearance Head, for interior use in Logistics track type applications where head diameter clearance is needed.



HLMCSC-R12  
CLEARANCE SLEEVE  
FOR METAL CLAD APPLICATIONS

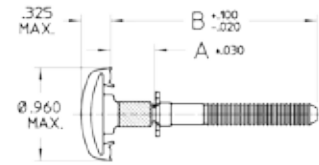
### MC Medium Bearing Head Sleeve

Part Number	Recommended Usage
HLMCS-R12	Medium Bearing Head, for use against interior rails and panel surfaces.



HLMCS-R12  
STANDARD SLEEVE  
FOR METAL CLAD APPLICATIONS

# HLMC Pins for Metal Clad Applications



HLMC(•)-R12-( )PL  
MEDIUM BEARING ENCAPSULATED HEAD  
FOR METAL CLAD APPLICATIONS

## Grey Encapsulated Head

Part Number	Grip Range	"A"	"B"	Recommended Usage	Compatible Sleeves
HLMCG-R12-4PL	0.187-0.312	0.338	1.993	For exterior use against bottom rails, corner posts, top rails, panel surface and other exterior applications where fastener is bearing against metal surfaces that are metallic grey in color.	HLMCS-R12 HLMCSC-R12
HLMCG-R12-5PL	0.250-0.375	0.400	2.055		
HLMCG-R12-6PL	0.312-0.437	0.462	2.118		
HLMCG-R12-7PL	0.375-0.500	0.525	2.180		
HLMCG-R12-8PL	0.437-0.562	0.588	2.243		

## White Encapsulated Head

Part Number	Grip Range	"A"	"B"	Recommended Usage	Compatible Sleeves
HLMCW-R12-4PL	0.187-0.312	0.338	1.993	For exterior use against bottom rails, corner posts, top rails, panel surface and other exterior applications where fastener is bearing against metal surfaces that are white in color.	HLMCS-R12 HLMCSC-R12
HLMCW-R12-5PL	0.250-0.375	0.400	2.055		
HLMCW-R12-6PL	0.312-0.437	0.462	2.118		
HLMCW-R12-7PL	0.375-0.500	0.525	2.180		
HLMCW-R12-8PL	0.437-0.562	0.588	2.243		

## Hertz/Penske Yellow Encapsulated Head

Part Number	Grip Range	"A"	"B"	Recommended Usage	Compatible Sleeves
HLMCHY-R12-4PL	0.187-0.312	0.338	1.993	For exterior use against bottom rails, corner posts, top rails, panel surface and other exterior applications where fastener is bearing against metal surfaces that are Hertz/Penske Yellow in color.	HLMCS-R12 HLMCSC-R12
HLMCHY-R12-5PL	0.250-0.375	0.400	2.055		
HLMCHY-R12-6PL	0.312-0.437	0.462	2.118		
HLMCHY-R12-7PL	0.375-0.500	0.525	2.180		
HLMCHY-R12-8PL	0.437-0.562	0.588	2.243		

## Yellow Encapsulated Head

Part Number	Grip Range	"A"	"B"	Recommended Usage	Compatible Sleeves
HLMCRY-R12-4PL	0.187-0.312	0.338	1.993	For exterior use against bottom rails, corner posts, top rails, panel surface and other exterior applications where fastener is bearing against metal surfaces that are Yellow in color.	HLMCS-R12 HLMCSC-R12
HLMCRY-R12-5PL	0.250-0.375	0.400	2.055		
HLMCRY-R12-6PL	0.312-0.437	0.462	2.118		
HLMCRY-R12-7PL	0.375-0.500	0.525	2.180		
HLMCRY-R12-8PL	0.437-0.562	0.588	2.243		

## MC Clearance Head Sleeve

Part Number	Recommended Usage
HLMCSC-R12	Clearance Head, for interior use in Logistics track type applications where head diameter clearance is needed.

HLMCSC-R12  
CLEARANCE SLEEVE  
FOR METAL CLAD APPLICATIONS

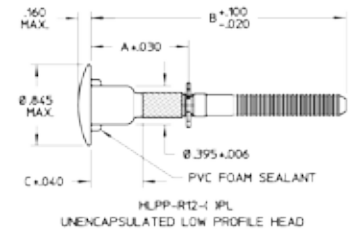
## MC Medium Bearing Head Sleeve

Part Number	Recommended Usage
HLMCS-R12	Medium Bearing Head, for use against interior rails and panel surfaces.

HLMCS-R12  
STANDARD SLEEVE  
FOR METAL CLAD APPLICATIONS

# Hucktainer® Pins

Standard HLP Pins for FRP Applications

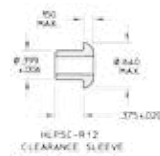


## Steel Head, No Encapsulation, with PVC Seal

Part Number	Grip Range	"A"	"B"	Recommended Usage	Compatible Sleeves
HLPP-R12-10PL	0.562-0.687	0.625	2.232	For exterior use against bottom rails, corner posts, top rails, and other exterior applications where fastener is bearing against metal surfaces.	HLPSC-R12 HLPSP-R12 HLPS-R12 HLPTS-R12
HLPP-R12-11PL	0.625-0.750	0.687	2.295		
HLPP-R12-12PL	0.687-0.812	0.750	2.357		
HLPP-R12-13PL	0.750-0.875	0.812	2.420		
HLPP-R12-14PL	0.812-0.937	0.875	2.482		
HLPP-R12-15PL	0.875-1.000	0.937	2.545		
HLPP-R12-16PL	0.937-1.062	1.000	2.607		
HLPP-R12-17PL	1.000-1.125	1.062	2.670		
HLPP-R12-18PL	1.062-1.187	1.125	2.732		
HLPP-R12-19PL	1.125-1.250	1.187	2.795		
HLPP-R12-20PL	1.187-1.312	1.250	2.857		
HLPP-R12-21PL	1.250-1.375	1.312	2.920		
HLPP-R12-22PL	1.312-1.437	1.375	2.982		
HLPP-R12-23PL	1.375-1.500	1.437	3.045		
HLPP-R12-24PL	1.437-1.562	1.500	3.107		
HLPP-R12-25PL	1.500-1.625	1.562	3.170		
HLPP-R12-26PL	1.562-1.687	1.625	3.232		
HLPP-R12-27PL	1.625-1.750	1.687	3.295		
HLPP-R12-28PL	1.687-1.812	1.750	3.357		
HLPP-R12-29PL	1.750-1.875	1.812	3.420		

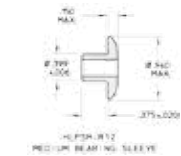
## Standard HLP Clearance Head Sleeve

Part Number	Recommended Usage
HLPSC-R12	Clearance Head, for use in Logistics track type applications where head diameter clearance is needed.



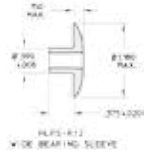
## Standard HLP Medium Bearing Sleeve

Part Number	Recommended Usage
HLPSP-R12	Medium Bearing Head, for use against interior bottom rails and other interior applications where fastener is bearing against metal surface.



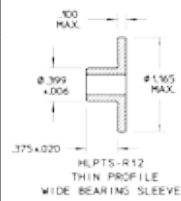
## Standard HLP Wide Bearing Sleeve

Part Number	Recommended Usage
HLPS-R12	Large Bearing Head, for use against interior FRP surfaces. Distributes clamp load to avoid gel coat crazing.

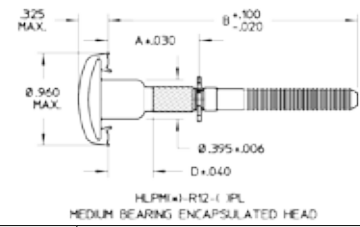


## Standard HLP Thin Profile Sleeve

Part Number	Recommended Usage
HLPTS-R12	Large Bearing Head with thin profile, for use against interior FRP surfaces. Distributes clamp load to avoid gel coat crazing. Thin profile allows for application of scuff liner over head surface.



# Standard HLP Pins for FRP Applications



## Grey Medium Bearing Encapsulated Head

Part Number	Grip Range	"A"	"B"
HLP(MG)-R12-9PL	0.500-0.625	0.562	2.170
HLP(MG)-R12-10PL	0.562-0.687	0.625	2.232
HLP(MG)-R12-11PL	0.625-0.750	0.687	2.295
HLP(MG)-R12-12PL	0.687-0.812	0.750	2.357
HLP(MG)-R12-13PL	0.750-0.875	0.812	2.420
HLP(MG)-R12-14PL	0.812-0.937	0.875	2.482
HLP(MG)-R12-15PL	0.875-1.000	0.937	2.545
HLP(MG)-R12-16PL	0.937-1.062	1.000	2.607
HLP(MG)-R12-17PL	1.000-1.125	1.062	2.670
HLP(MG)-R12-18PL	1.062-1.187	1.125	2.732
HLP(MG)-R12-19PL	1.125-1.250	1.187	2.795
HLP(MG)-R12-20PL	1.187-1.312	1.250	2.857
HLP(MG)-R12-21PL	1.250-1.375	1.312	2.920
HLP(MG)-R12-22PL	1.312-1.437	1.375	2.982
HLP(MG)-R12-23PL	1.375-1.500	1.437	3.045
HLP(MG)-R12-24PL	1.437-1.562	1.500	3.107
HLP(MG)-R12-25PL	1.500-1.625	1.562	3.170
HLP(MG)-R12-26PL	1.562-1.687	1.625	3.232
HLP(MG)-R12-27PL	1.625-1.750	1.687	3.295
HLP(MG)-R12-28PL	1.687-1.812	1.750	3.357
HLP(MG)-R12-29PL	1.750-1.875	1.812	3.420

**Recommended Usage**

For exterior use against bottom rails, corner posts, top rails, and other exterior applications where fastener is bearing against metal surfaces that are metallic grey in color.

**Compatible Sleeves**

HLPS-C-R12  
HLPS-M-R12  
HLPS-R12  
HLPTS-R12

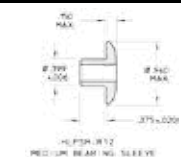
## Standard HLP Clearance Head Sleeve

Part Number	Recommended Usage
HLPS-C-R12	Clearance Head, for use in Logistics track type applications where head diameter clearance is needed.



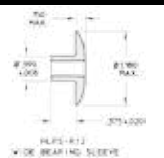
## Standard HLP Medium Bearing Sleeve

Part Number	Recommended Usage
HLPS-M-R12	Medium Bearing Head, for use against interior bottom rails and other interior applications where fastener is bearing against metal surface.



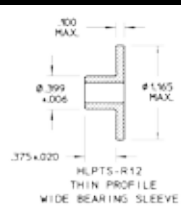
## Standard HLP Wide Bearing Sleeve

Part Number	Recommended Usage
HLPS-W-R12	Large Bearing Head, for use against interior FRP surfaces. Distributes clamp load to avoid gel coat crazing.

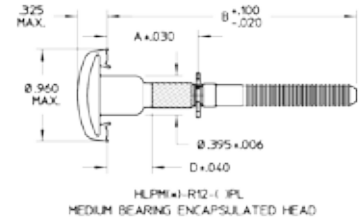


## Standard HLP Thin Profile Sleeve

Part Number	Recommended Usage
HLPTS-R12	Large Bearing Head with thin profile, for use against interior FRP surfaces. Distributes clamp load to avoid gel coat crazing. Thin profile allows for application of scuff liner over head surface.



# Standard HLP Pins for FRP Applications



## White Medium Bearing Encapsulated Head

Part Number	Grip Range	"A"	"B"	Recommended Usage	Compatible Sleeves
HLPMW-R12-9PL	0.500-0.625	0.562	2.170	For exterior use against bottom rails, corner posts, top rails, and other exterior applications where fastener is bearing against metal surfaces that are white in color.	HLPS-C-R12 HLPS-M-R12 HLPS-R12 HLPTS-R12
HLPMW-R12-10PL	0.562-0.687	0.625	2.232		
HLPMW-R12-11PL	0.625-0.750	0.687	2.295		
HLPMW-R12-12PL	0.687-0.812	0.750	2.357		
HLPMW-R12-13PL	0.750-0.875	0.812	2.420		
HLPMW-R12-14PL	0.812-0.937	0.875	2.482		
HLPMW-R12-15PL	0.875-1.000	0.937	2.545		
HLPMW-R12-16PL	0.937-1.062	1.000	2.607		
HLPMW-R12-17PL	1.000-1.125	1.062	2.670		
HLPMW-R12-18PL	1.062-1.187	1.125	2.732		
HLPMW-R12-19PL	1.125-1.250	1.187	2.795		
HLPMW-R12-20PL	1.187-1.312	1.250	2.857		
HLPMW-R12-21PL	1.250-1.375	1.312	2.920		
HLPMW-R12-22PL	1.312-1.437	1.375	2.982		
HLPMW-R12-23PL	1.375-1.500	1.437	3.045		
HLPMW-R12-24PL	1.437-1.562	1.500	3.107		
HLPMW-R12-25PL	1.500-1.625	1.562	3.170		
HLPMW-R12-26PL	1.562-1.687	1.625	3.232		
HLPMW-R12-27PL	1.625-1.750	1.687	3.295		
HLPMW-R12-28PL	1.687-1.812	1.750	3.357		
HLPMW-R12-29PL	1.750-1.875	1.812	3.420		

## Standard HLP Clearance Head Sleeve

Part Number	Recommended Usage	Diagram
HLPS-C-R12	Clearance Head, for use in Logistics track type applications where head diameter clearance is needed.	

## Standard HLP Medium Bearing Sleeve

Part Number	Recommended Usage	Diagram
HLPS-M-R12	Medium Bearing Head, for use against interior bottom rails and other interior applications where fastener is bearing against metal surface.	

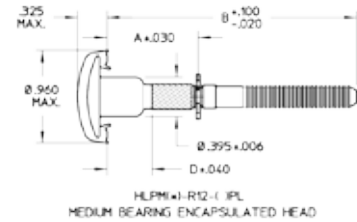
## Standard HLP Wide Bearing Sleeve

Part Number	Recommended Usage	Diagram
HLPS-W-R12	Large Bearing Head, for use against interior FRP surfaces. Distributes clamp load to avoid gel coat crazing.	

## Standard HLP Thin Profile Sleeve

Part Number	Recommended Usage	Diagram
HLPTS-R12	Large Bearing Head with thin profile, for use against interior FRP surfaces. Distributes clamp load to avoid gel coat crazing. Thin profile allows for application of scuff liner over head surface.	

# Standard HLP Pins for FRP Applications



## Hertz/Penske Yellow Medium Bearing Encapsulated Head

Part Number	Grip Range	"A"	"B"
HLPMHY-R12-9PL	0.500-0.625	0.562	2.170
HLPMHY-R12-10PL	0.562-0.687	0.625	2.232
HLPMHY-R12-11PL	0.625-0.750	0.687	2.295
HLPMHY-R12-12PL	0.687-0.812	0.750	2.357
HLPMHY-R12-13PL	0.750-0.875	0.812	2.420
HLPMHY-R12-14PL	0.812-0.937	0.875	2.482
HLPMHY-R12-15PL	0.875-1.000	0.937	2.545
HLPMHY-R12-16PL	0.937-1.062	1.000	2.607
HLPMHY-R12-17PL	1.000-1.125	1.062	2.670
HLPMHY-R12-18PL	1.062-1.187	1.125	2.732
HLPMHY-R12-19PL	1.125-1.250	1.187	2.795
HLPMHY-R12-20PL	1.187-1.312	1.250	2.857
HLPMHY-R12-21PL	1.250-1.375	1.312	2.920
HLPMHY-R12-22PL	1.312-1.437	1.375	2.982
HLPMHY-R12-23PL	1.375-1.500	1.437	3.045
HLPMHY-R12-24PL	1.437-1.562	1.500	3.107
HLPMHY-R12-25PL	1.500-1.625	1.562	3.170
HLPMHY-R12-26PL	1.562-1.687	1.625	3.232
HLPMHY-R12-27PL	1.625-1.750	1.687	3.295
HLPMHY-R12-28PL	1.687-1.812	1.750	3.357
HLPMHY-R12-29PL	1.750-1.875	1.812	3.420

**Recommended Usage**

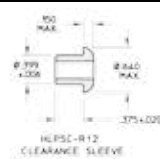
For exterior use against bottom rails, corner posts, top rails, and other exterior applications where fastener is bearing against metal surfaces that are Hertz/Penske Yellow in color.

**Compatible Sleeves**

HLPSC-R12  
HLPMS-R12  
HLPS-R12  
HLPTS-R12

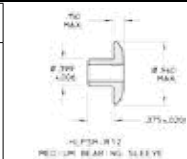
## Standard HLP Clearance Head Sleeve

Part Number	Recommended Usage
HLPSC-R12	Clearance Head, for use in Logistics track type applications where head diameter clearance is needed.



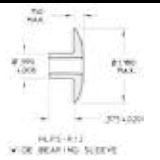
## Standard HLP Medium Bearing Sleeve

Part Number	Recommended Usage
HLPMS-R12	Medium Bearing Head, for use against interior bottom rails and other interior applications where fastener is bearing against metal surface.



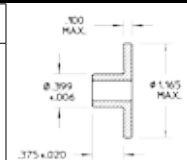
## Standard HLP Wide Bearing Sleeve

Part Number	Recommended Usage
HLPS-R12	Large Bearing Head, for use against interior FRP surfaces. Distributes clamp load to avoid gel coat crazing.



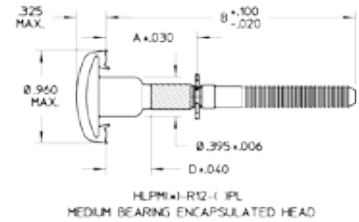
## Standard HLP Thin Profile Sleeve

Part Number	Recommended Usage
HLPTS-R12	Large Bearing Head with thin profile, for use against interior FRP surfaces. Distributes clamp load to avoid gel coat crazing. Thin profile allows for application of scuff liner over head surface.





# Standard HLP Pins for FRP Applications

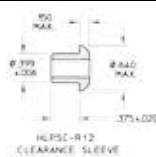


## Yellow Medium Bearing Encapsulated Head

Part Number	Grip Range	"A"	"B"	Recommended Usage	Compatible Sleeves
HLPMPY-R12-9PL	0.500-0.625	0.562	2.170	For exterior use against bottom rails, corner posts, top rails, and other exterior applications where fastener is bearing against metal surfaces that are Yellow in color.	HLPSC-R12 HLPSM-R12 HLPS-R12 HLPTS-R12
HLPMPY-R12-10PL	0.562-0.687	0.625	2.232		
HLPMPY-R12-11PL	0.625-0.750	0.687	2.295		
HLPMPY-R12-12PL	0.687-0.812	0.750	2.357		
HLPMPY-R12-13PL	0.750-0.875	0.812	2.420		
HLPMPY-R12-14PL	0.812-0.937	0.875	2.482		
HLPMPY-R12-15PL	0.875-1.000	0.937	2.545		
HLPMPY-R12-16PL	0.937-1.062	1.000	2.607		
HLPMPY-R12-17PL	1.000-1.125	1.062	2.670		
HLPMPY-R12-18PL	1.062-1.187	1.125	2.732		
HLPMPY-R12-19PL	1.125-1.250	1.187	2.795		
HLPMPY-R12-20PL	1.187-1.312	1.250	2.857		
HLPMPY-R12-21PL	1.250-1.375	1.312	2.920		
HLPMPY-R12-22PL	1.312-1.437	1.375	2.982		
HLPMPY-R12-23PL	1.375-1.500	1.437	3.045		
HLPMPY-R12-24PL	1.437-1.562	1.500	3.107		
HLPMPY-R12-25PL	1.500-1.625	1.562	3.170		
HLPMPY-R12-26PL	1.562-1.687	1.625	3.232		
HLPMPY-R12-27PL	1.625-1.750	1.687	3.295		
HLPMPY-R12-28PL	1.687-1.812	1.750	3.357		
HLPMPY-R12-29PL	1.750-1.875	1.812	3.420		

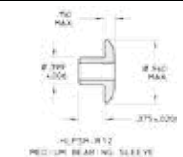
## Standard HLP Clearance Head Sleeve

Part Number	Recommended Usage
HLPSC-R12	Clearance Head, for use in Logistics track type applications where head diameter clearance is needed.



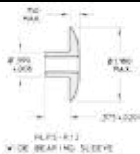
## Standard HLP Medium Bearing Sleeve

Part Number	Recommended Usage
HLPSM-R12	Medium Bearing Head, for use against interior bottom rails and other interior applications where fastener is bearing against metal surface.



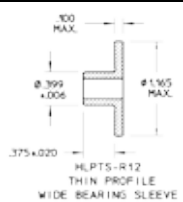
## Standard HLP Wide Bearing Sleeve

Part Number	Recommended Usage
HLPS-R12	Large Bearing Head, for use against interior FRP surfaces. Distributes clamp load to avoid gel coat crazing.

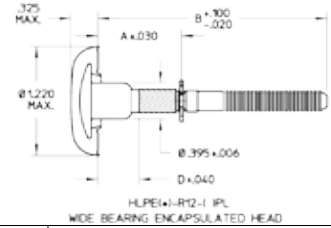


## Standard HLP Thin Profile Sleeve

Part Number	Recommended Usage
HLPTS-R12	Large Bearing Head with thin profile, for use against interior FRP surfaces. Distributes clamp load to avoid gel coat crazing. Thin profile allows for application of scuff liner over head surface.



# Standard HLP Pins for FRP Applications



## Grey Wide Bearing Encapsulated Head

Part Number	Grip Range	"A"	"B"
HLPEG-R12-9PL	0.500-0.625	0.562	2.170
HLPEG-R12-10PL	0.562-0.687	0.625	2.232
HLPEG-R12-11PL	0.625-0.750	0.687	2.295
HLPEG-R12-12PL	0.687-0.812	0.750	2.357
HLPEG-R12-13PL	0.750-0.875	0.812	2.420
HLPEG-R12-14PL	0.812-0.937	0.875	2.482
HLPEG-R12-15PL	0.875-1.000	0.937	2.545
HLPEG-R12-16PL	0.937-1.062	1.000	2.607
HLPEG-R12-17PL	1.000-1.125	1.062	2.670
HLPEG-R12-18PL	1.062-1.187	1.125	2.732
HLPEG-R12-19PL	1.125-1.250	1.187	2.795
HLPEG-R12-20PL	1.187-1.312	1.250	2.857
HLPEG-R12-21PL	1.250-1.375	1.312	2.920
HLPEG-R12-22PL	1.312-1.437	1.375	2.982
HLPEG-R12-23PL	1.375-1.500	1.437	3.045
HLPEG-R12-24PL	1.437-1.562	1.500	3.107
HLPEG-R12-25PL	1.500-1.625	1.562	3.170
HLPEG-R12-26PL	1.562-1.687	1.625	3.232
HLPEG-R12-27PL	1.625-1.750	1.687	3.295
HLPEG-R12-28PL	1.687-1.812	1.750	3.357
HLPEG-R12-29PL	1.750-1.875	1.812	3.420

**Recommended Usage**

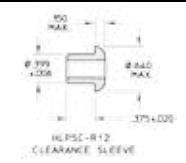
For exterior use against FRP Panels that are metallic grey in color. Wide bearing encapsulated head helps to distribute clamp load to avoid dimpling or crazing of surface.

**Compatible Sleeves**

HLPSC-R12  
 HLPSP-R12  
 HLPS-R12  
 HLPTS-R12

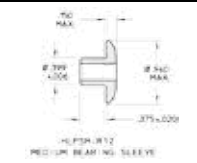
## Standard HLP Clearance Head Sleeve

Part Number	Recommended Usage
HLPSC-R12	Clearance Head, for use in Logistics track type applications where head diameter clearance is needed.



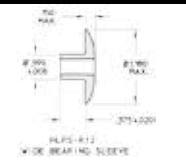
## Standard HLP Medium Bearing Sleeve

Part Number	Recommended Usage
HLPSP-R12	Medium Bearing Head, for use against interior bottom rails and other interior applications where fastener is bearing against metal surface.



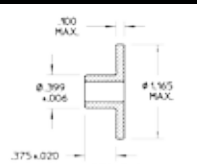
## Standard HLP Wide Bearing Sleeve

Part Number	Recommended Usage
HLPS-R12	Large Bearing Head, for use against interior FRP surfaces. Distributes clamp load to avoid gel coat crazing.

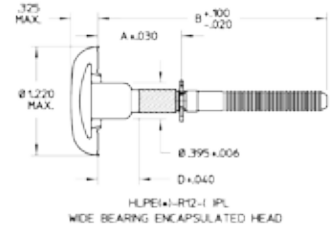


## Standard HLP Thin Profile Sleeve

Part Number	Recommended Usage
HLPTS-R12	Large Bearing Head with thin profile, for use against interior FRP surfaces. Distributes clamp load to avoid gel coat crazing. Thin profile allows for application of scuff liner over head surface.



# Standard HLP Pins for FRP Applications



## White Wide Bearing Encapsulated Head

Part Number	Grip Range	"A"	"B"
HLPEW-R12-9PL	0.500-0.625	0.562	2.170
HLPEW-R12-10PL	0.562-0.687	0.625	2.232
HLPEW-R12-11PL	0.625-0.750	0.687	2.295
HLPEW-R12-12PL	0.687-0.812	0.750	2.357
HLPEW-R12-13PL	0.750-0.875	0.812	2.420
HLPEW-R12-14PL	0.812-0.937	0.875	2.482
HLPEW-R12-15PL	0.875-1.000	0.937	2.545
HLPEW-R12-16PL	0.937-1.062	1.000	2.607
HLPEW-R12-17PL	1.000-1.125	1.062	2.670
HLPEW-R12-18PL	1.062-1.187	1.125	2.732
HLPEW-R12-19PL	1.125-1.250	1.187	2.795
HLPEW-R12-20PL	1.187-1.312	1.250	2.857
HLPEW-R12-21PL	1.250-1.375	1.312	2.920
HLPEW-R12-22PL	1.312-1.437	1.375	2.982
HLPEW-R12-23PL	1.375-1.500	1.437	3.045
HLPEW-R12-24PL	1.437-1.562	1.500	3.107
HLPEW-R12-25PL	1.500-1.625	1.562	3.170
HLPEW-R12-26PL	1.562-1.687	1.625	3.232
HLPEW-R12-27PL	1.625-1.750	1.687	3.295
HLPEW-R12-28PL	1.687-1.812	1.750	3.357
HLPEW-R12-29PL	1.750-1.875	1.812	3.420

**Recommended Usage**

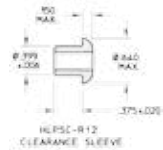
For exterior use against FRP Panels that are white in color. Wide bearing encapsulated head helps to distribute clamp load to avoid dimpling or crazing of surface.

**Compatible Sleeves**

HLPSC-R12  
HLPSM-R12  
HLPS-R12  
HLPTS-R12

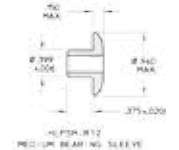
## Standard HLP Clearance Head Sleeve

Part Number	Recommended Usage
HLPSC-R12	Clearance Head, for use in Logistics track type applications where head diameter clearance is needed.



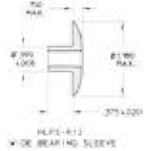
## Standard HLP Medium Bearing Sleeve

Part Number	Recommended Usage
HLPSM-R12	Medium Bearing Head, for use against interior bottom rails and other interior applications where fastener is bearing against metal surface.



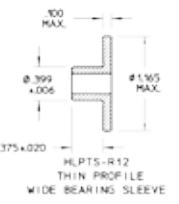
## Standard HLP Wide Bearing Sleeve

Part Number	Recommended Usage
HLPS-R12	Large Bearing Head, for use against interior FRP surfaces. Distributes clamp load to avoid gel coat crazing.

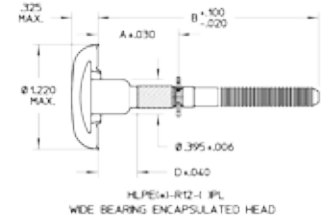


## Standard HLP Thin Profile Sleeve

Part Number	Recommended Usage
HLPTS-R12	Large Bearing Head with thin profile, for use against interior FRP surfaces. Distributes clamp load to avoid gel coat crazing. Thin profile allows for application of scuff liner over head surface.



# Standard HLP Pins for FRP Applications



## Hertz/Penske Yellow Wide Bearing Encapsulated Head

Part Number	Grip Range	"A"	"B"
HLPEHY-R12-9PL	0.500-0.625	0.562	2.170
HLPEHY-R12-10PL	0.562-0.687	0.625	2.232
HLPEHY-R12-11PL	0.625-0.750	0.687	2.295
HLPEHY-R12-12PL	0.687-0.812	0.750	2.357
HLPEHY-R12-13PL	0.750-0.875	0.812	2.420
HLPEHY-R12-14PL	0.812-0.937	0.875	2.482
HLPEHY-R12-15PL	0.875-1.000	0.937	2.545
HLPEHY-R12-16PL	0.937-1.062	1.000	2.607
HLPEHY-R12-17PL	1.000-1.125	1.062	2.670
HLPEHY-R12-18PL	1.062-1.187	1.125	2.732
HLPEHY-R12-19PL	1.125-1.250	1.187	2.795
HLPEHY-R12-20PL	1.187-1.312	1.250	2.857
HLPEHY-R12-21PL	1.250-1.375	1.312	2.920
HLPEHY-R12-22PL	1.312-1.437	1.375	2.982
HLPEHY-R12-23PL	1.375-1.500	1.437	3.045
HLPEHY-R12-24PL	1.437-1.562	1.500	3.107
HLPEHY-R12-25PL	1.500-1.625	1.562	3.170
HLPEHY-R12-26PL	1.562-1.687	1.625	3.232
HLPEHY-R12-27PL	1.625-1.750	1.687	3.295
HLPEHY-R12-28PL	1.687-1.812	1.750	3.357
HLPEHY-R12-29PL	1.750-1.875	1.812	3.420

**Recommended Usage**

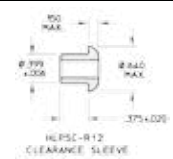
For exterior use against FRP Panels that are Hertz/Penske Yellow in color. Wide bearing encapsulated head helps to distribute clamp load to avoid dimpling or crazing of surface.

**Compatible Sleeves**

HLPSC-R12  
HLPSCM-R12  
HLPS-R12  
HLPTS-R12

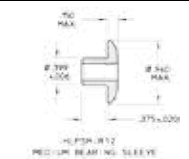
## Standard HLP Clearance Head Sleeve

Part Number	Recommended Usage
HLPSC-R12	Clearance Head, for use in Logistics track type applications where head diameter clearance is needed.



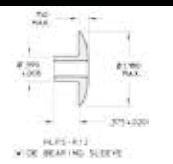
## Standard HLP Medium Bearing Sleeve

Part Number	Recommended Usage
HLPSCM-R12	Medium Bearing Head, for use against interior bottom rails and other interior applications where fastener is bearing against metal surface.



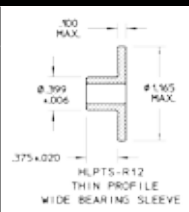
## Standard HLP Wide Bearing Sleeve

Part Number	Recommended Usage
HLPS-R12	Large Bearing Head, for use against interior FRP surfaces. Distributes clamp load to avoid gel coat crazing.

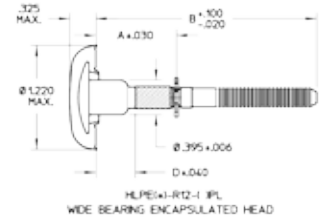


## Standard HLP Thin Profile Sleeve

Part Number	Recommended Usage
HLPTS-R12	Large Bearing Head with thin profile, for use against interior FRP surfaces. Distributes clamp load to avoid gel coat crazing. Thin profile allows for application of scuff liner over head surface.



# Standard HLP Pins for FRP Applications



## Yellow Wide Bearing Encapsulated Head

Part Number	Grip Range	"A"	"B"	Recommended Usage	Compatible Sleeves
HLPERY-R12-9PL	0.500-0.625	0.562	2.170	For exterior use against FRP Panels that are Yellow in color. Wide bearing encapsulated head helps to distribute clamp load to avoid dimpling or crazing of surface.	HLPS-C-R12 HLPSM-R12 HLPS-R12 HLPTS-R12
HLPERY-R12-10PL	0.562-0.687	0.625	2.232		
HLPERY-R12-11PL	0.625-0.750	0.687	2.295		
HLPERY-R12-12PL	0.687-0.812	0.750	2.357		
HLPERY-R12-13PL	0.750-0.875	0.812	2.420		
HLPERY-R12-14PL	0.812-0.937	0.875	2.482		
HLPERY-R12-15PL	0.875-1.000	0.937	2.545		
HLPERY-R12-16PL	0.937-1.062	1.000	2.607		
HLPERY-R12-17PL	1.000-1.125	1.062	2.670		
HLPERY-R12-18PL	1.062-1.187	1.125	2.732		
HLPERY-R12-19PL	1.125-1.250	1.187	2.795		
HLPERY-R12-20PL	1.187-1.312	1.250	2.857		
HLPERY-R12-21PL	1.250-1.375	1.312	2.920		
HLPERY-R12-22PL	1.312-1.437	1.375	2.982		
HLPERY-R12-23PL	1.375-1.500	1.437	3.045		
HLPERY-R12-24PL	1.437-1.562	1.500	3.107		
HLPERY-R12-25PL	1.500-1.625	1.562	3.170		
HLPERY-R12-26PL	1.562-1.687	1.625	3.232		
HLPERY-R12-27PL	1.625-1.750	1.687	3.295		
HLPERY-R12-28PL	1.687-1.812	1.750	3.357		
HLPERY-R12-29PL	1.750-1.875	1.812	3.420		

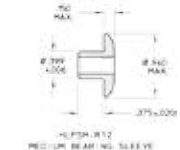
## Standard HLP Clearance Head Sleeve

Part Number	Recommended Usage
HLPS-C-R12	Clearance Head, for use in Logistics track type applications where head diameter clearance is needed.



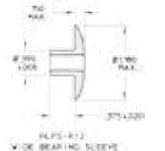
## Standard HLP Medium Bearing Sleeve

Part Number	Recommended Usage
HLPSM-R12	Medium Bearing Head, for use against interior bottom rails and other interior applications where fastener is bearing against metal surface.



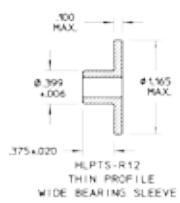
## Standard HLP Wide Bearing Sleeve

Part Number	Recommended Usage
HLPS-R12	Large Bearing Head, for use against interior FRP surfaces. Distributes clamp load to avoid gel coat crazing.

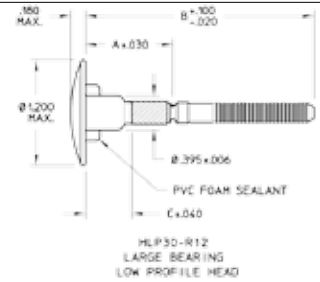


## Standard HLP Thin Profile Sleeve

Part Number	Recommended Usage
HLPTS-R12	Large Bearing Head with thin profile, for use against interior FRP surfaces. Distributes clamp load to avoid gel coat crazing. Thin profile allows for application of scuff liner over head surface.



# Standard HLP Pins for FRP Applications

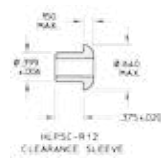


## Wide Bearing Steel Head

Part Number	Grip Range	"A"	"B"	Recommended Usage	Compatible Sleeves
HLP30-R12-10PL	0.562-0.687	0.625	2.232	For exterior use against FRP Panels where decals are applied over the fastener head. Wide bearing encapsulated head helps to distribute clamp load to avoid dimpling or crazing of surface. Lower profile head allows decals to adhere and reduce bubbling around head.	HLPSC-R12 HLPSPM-R12 HLP30-R12 HLPTS-R12
HLP30-R12-11PL	0.625-0.750	0.687	2.295		
HLP30-R12-12PL	0.687-0.812	0.750	2.357		
HLP30-R12-13PL	0.750-0.875	0.812	2.420		
HLP30-R12-14PL	0.812-0.937	0.875	2.482		
HLP30-R12-15PL	0.875-1.000	0.937	2.545		
HLP30-R12-16PL	0.937-1.062	1.000	2.607		
HLP30-R12-17PL	1.000-1.125	1.062	2.670		
HLP30-R12-18PL	1.062-1.187	1.125	2.732		
HLP30-R12-19PL	1.125-1.250	1.187	2.795		
HLP30-R12-20PL	1.187-1.312	1.250	2.857		
HLP30-R12-21PL	1.250-1.375	1.312	2.920		
HLP30-R12-22PL	1.312-1.437	1.375	2.982		
HLP30-R12-23PL	1.375-1.500	1.437	3.045		
HLP30-R12-24PL	1.437-1.562	1.500	3.107		
HLP30-R12-25PL	1.500-1.625	1.562	3.170		
HLP30-R12-26PL	1.562-1.687	1.625	3.232		
HLP30-R12-27PL	1.625-1.750	1.687	3.295		
HLP30-R12-28PL	1.687-1.812	1.750	3.357		
HLP30-R12-29PL	1.750-1.875	1.812	3.420		

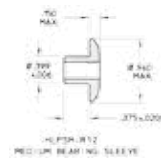
## Standard HLP Clearance Head Sleeve

Part Number	Recommended Usage
HLPSC-R12	Clearance Head, for use in Logistics track type applications where head diameter clearance is needed.



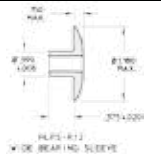
## Standard HLP Medium Bearing Sleeve

Part Number	Recommended Usage
HLPSM-R12	Medium Bearing Head, for use against interior bottom rails and other interior applications where fastener is bearing against metal surface.



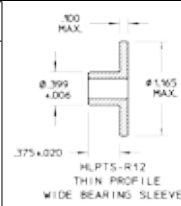
## Standard HLP Wide Bearing Sleeve

Part Number	Recommended Usage
HLPS-R12	Large Bearing Head, for use against interior FRP surfaces. Distributes clamp load to avoid gel coat crazing.



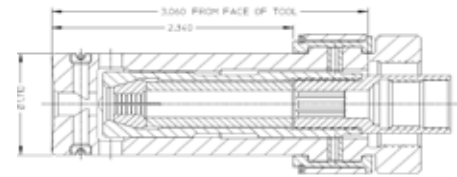
## Standard HLP Thin Profile Sleeve

Part Number	Recommended Usage
HLPTS-R12	Large Bearing Head with thin profile, for use against interior FRP surfaces. Distributes clamp load to avoid gel coat crazing. Thin profile allows for application of scuff liner over head surface.

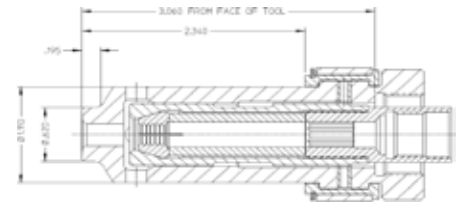


# Hucktainer® Nose Assemblies

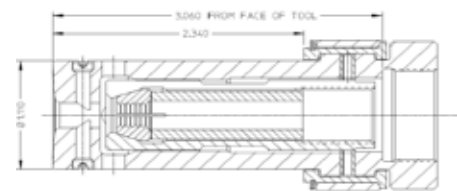
Part Number	Used with Tools		Notes
99-3464	2025	Air	Standard wide bearing nose, retaining pins keep pins from protruding from end of nose. Non-self releasing.
	2025S	Air	
	2480	Hydraulic	



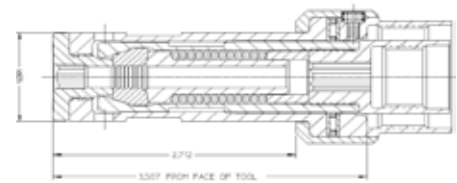
Part Number	Used with Tools		Notes
99-3464-1	2025	Air	Clearance nose for use with clearance sleeves in logistics tracks and other applications where interference is an issue. Non-self releasing.
	2025S	Air	
	2480	Hydraulic	



Part Number	Used with Tools		Notes
99-3464L	2025L	Air	Wide bearing nose, for use with long piston tools. Retaining pins keep pins from protruding from end of nose. Non-self releasing.
	2025SL	Air	
	2480L	Hydraulic	



Part Number	Used with Tools		Notes
99-3438	245	Air	Standard wide bearing nose, self releasing, pintails pass through both directions without resistance.
	246	Air	
	255	Air	
	256	Air	
	2580	Hydraulic	





**Industrial Fastener Division**

8001 Imperial Drive  
Waco, TX 76712, USA  
P.O. Box 8117  
Waco, TX 76714-8117, USA  
Tel: 800-388-4825  
Fax: 800-798-4825

[AFShuck.net](http://AFShuck.net)

[youtube.com/AFSindustrial](http://youtube.com/AFSindustrial)

© 2014 Alcoa Fastening Systems AFS5934 0614 ??

**Alcoa  
Fastening  
Systems**

